

FILED
GREENVILLE CO. S. C.

AUG 8 4 35 PM 1966

OLLIE FARNSWORTH
R.M.C.

MONROE STREET

EXIS. 2" GALV.

EXIS. 6" CE

2" TAP

2" TAP

2-1" TAPS

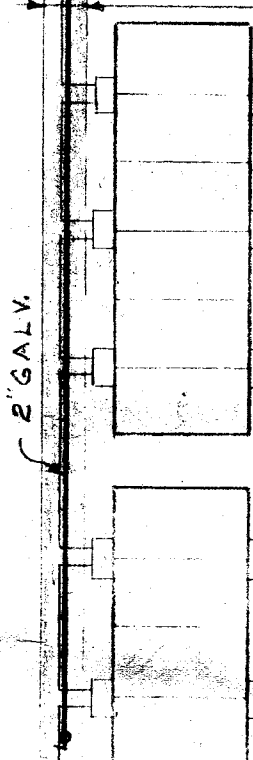
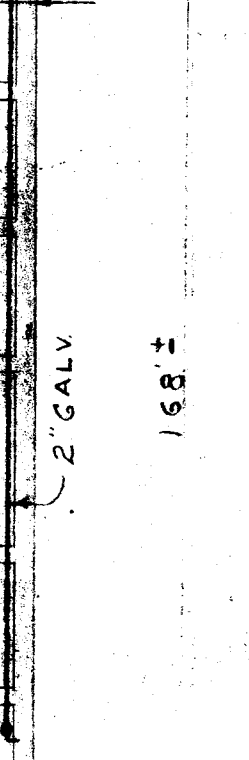
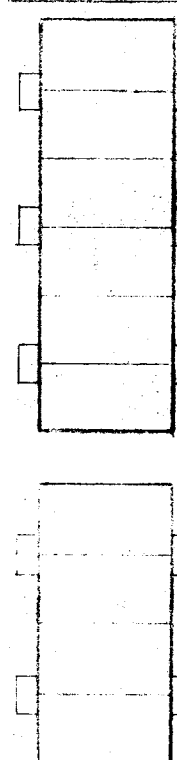
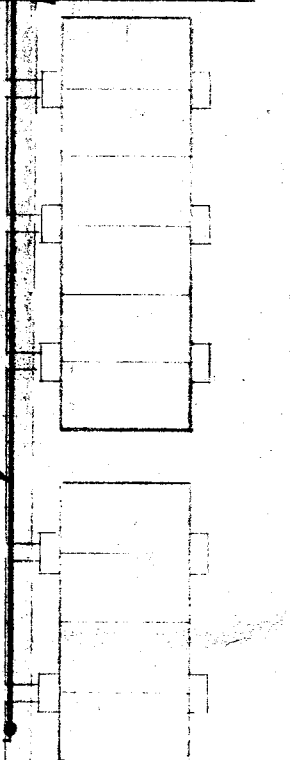
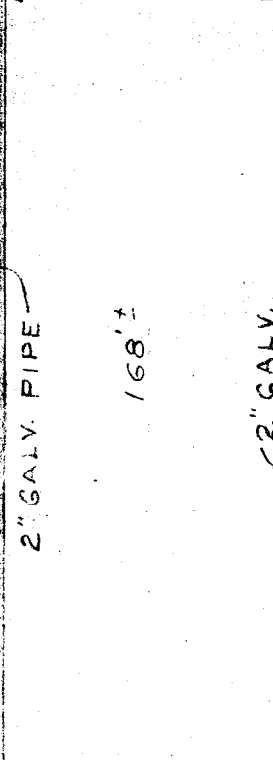
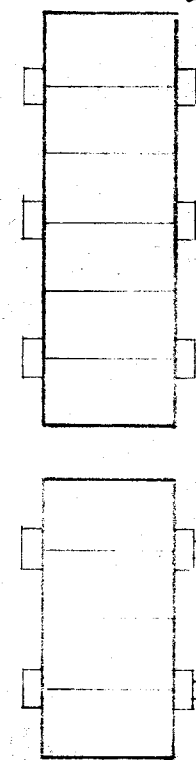
2-1" TAPS

EASEMENT 10'

10' EASEMENT

EASEMENT 10'

10' EASEMENT



UTILITY EASEMENTS
KINGSTON REALTY CO. INC.
TO
CITY OF GREENVILLE

5'-0" 10'-0" EASEMENT
4'-0" 1'-0" 2'-6" 2'-6" 6" 4'-0" 6"

PORCH

MAIN BLDG. LINE

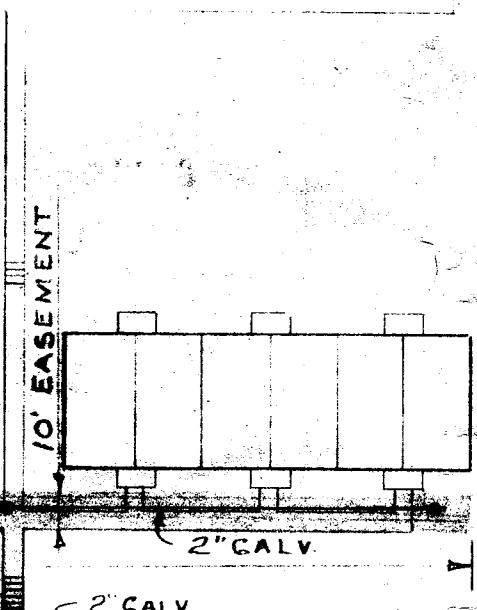
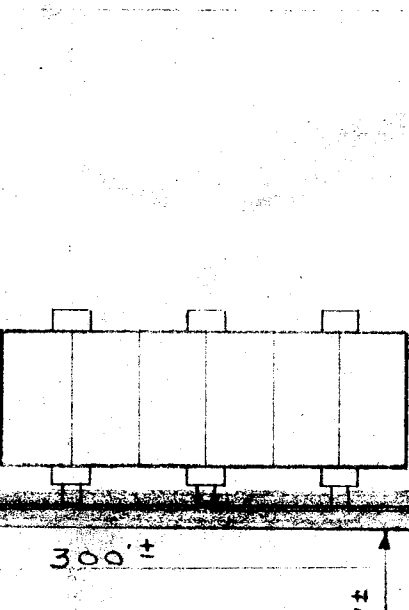
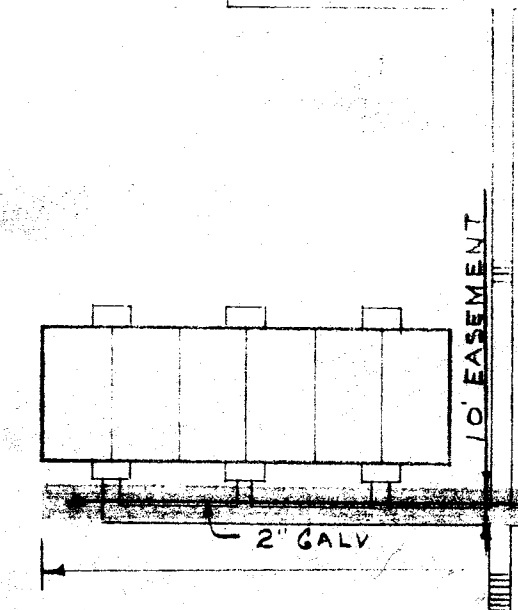
EASEMENT LINE

METER BOX

2" WATER MAIN

FACE OF CURB

TYPICAL SECTION
SHOWING EASEMENT FOR WATER MAIN
& WATER METERS



HUFF STREET

2" GALV.

3'-0" ±

2" GALV.

2" GALV.

10' EASEMENT

3'-8" ±

2-1" TAPS

1.00

EXIS. 2" GALV.

MMN-7

3947

HUFF APARTMENTS
SCALE 1"=40' MAY 1966

3947 Filed This 8 day of Aug 19 66
And Recorded in Vol. MMN Page 7 at 4:35 P.M.
Ollie Farnsworth
Register Mesne Conveyance Greenville County, S. C.